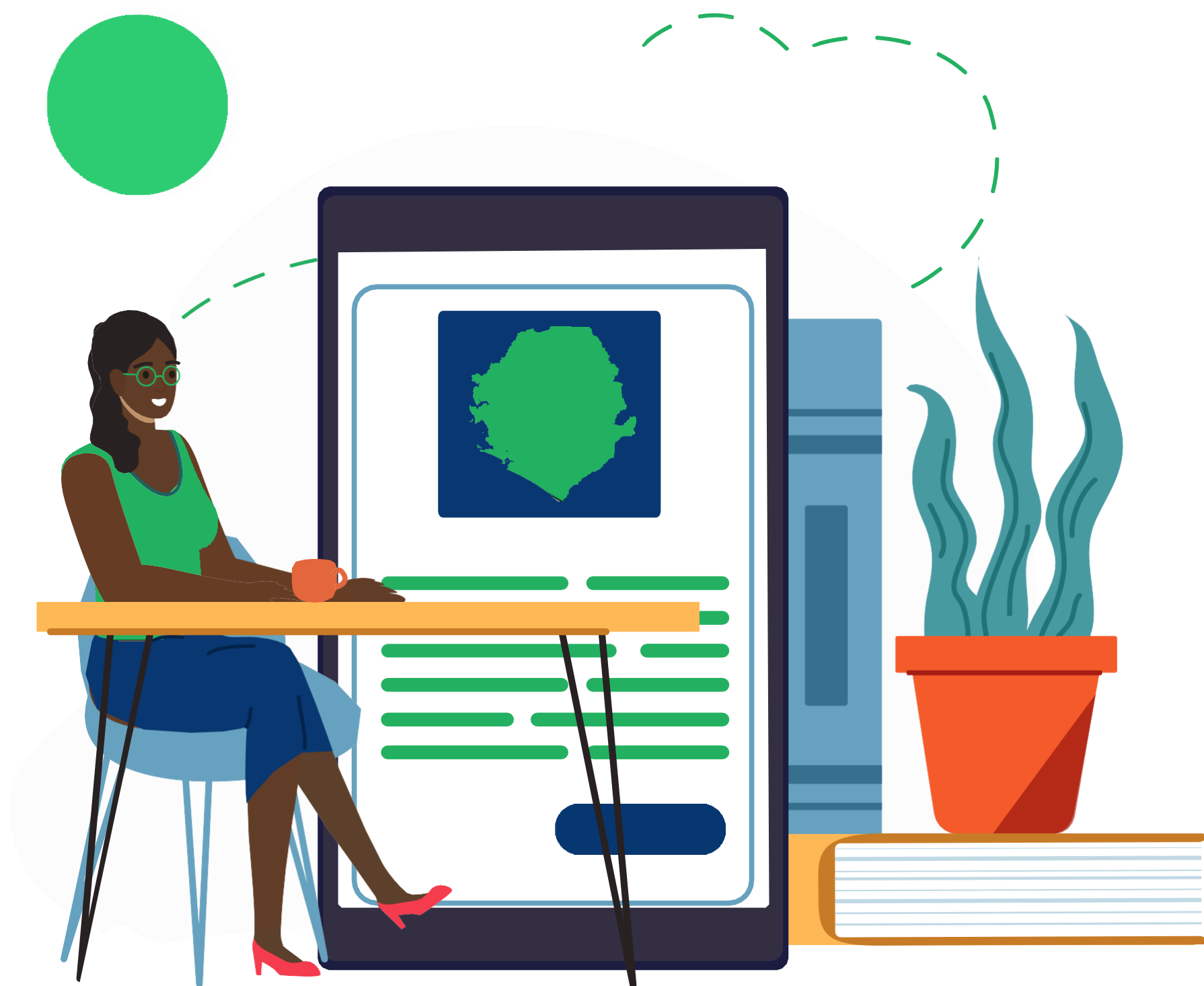


AUTOMATED SCHOOL MASTER LIST

Partners Manual



This manual provides information for Partners on how to access and retrieve data from the School Master List database.

CONTENTS

Overview	Page 3
Data access request	Page 3
Data download	Page 4

OVERVIEW

School Master List is a database which hosts the most up-to-date school data in Sierra Leone, providing partners and stakeholders alike with access to the latest list of schools.

The data contained within the initial development of the School Master List include:

- EMIS code
- School name
- Region
- District
- Council
- Chiefdom
- Ward
- Section
- Town
- Geo location (latitude & longitude)
- School level
- School status (operation or not operational)
- Shift status

DATA ACCESS REQUEST

Partners can request access to the School Master List data using the following link:

<https://schoollist.mbsse.gov.sl/data-request>

And by sending an official email to the Director of Policy & Planning, stating the intended use of the School Master List.

The contact details are:

Name: Ms Adama Jean Momoh

Email: amomoh@education.gov.sl

Upon accepting the request, the Director of Planning will confirm the partner registration on the platform. The platform will generate an API key, which the Director of Planning will share along with the URL and instructions on how to access the school list from the platform with the partner.

TROUBLESHOOTING & CONTACT INFORMATION

For more information, please contact Deputy Director of EMIS Mr Ansumana at jkansumana@education.gov.sl who will be able to help


DATA DOWNLOAD

Please use the following base URL and replace *KEY* with the API key provided to you by the Director of Planning to obtain the national data for all school levels:

<https://schoollist.mbsse.gov.sl/api/KEY/national>

For example: <https://schoollist.mbsse.gov.sl/api/aaaaaaaa-bbbb-cccc-dddd-eeeeeeeeeeee/national>

The URL with a valid API key will take user to the page from where the national list of schools may be obtained, and navigation to other sub-locations including regions, districts, and councils is allowed.

 MBSSE School List

Home

National

Regions

Districts

Councils

Base Url

<https://schoollist.mbsse.gov.sl/api/>

/national

School type parameter values:

primary

pre-primary

junior

senior

Note: council and district may be different if there is more than one council in a district

NATIONAL	NATIONAL LEVEL ENDPOINT	NATIONAL AND SCHOOL TYPE ENDPOINT	EXPLANATION	CSV	JSON
National	/national	/national/type{school_type}	Operational schools nationwide	Download	View

You may further tailor the URL link to retrieve data for specific location and/or school level.


https://schoollist.mbsse.gov.sl/api/KEY/location/SPECIFY/type/SCHOOL_TYPE where:

1.

location may be replaced with the following values: national, region, district, or council, followed by the specific area which replaces *SPECIFY*. The exact value for each area may be found using the base URL and navigating to Regions, Districts, or Councils as shown below (e.g. ‘northern’, ‘southern’, etc.).
2.

SCHOOL_TYPE may be replaced with the following values: pre-primary, primary, junior, senior.

*Note the location and school type specifications are optional.

 MBSSE School List

Home

National

Regions

Districts

Councils

Base Url

<https://schoollist.mbsse.gov.sl/api/>

/region

School type parameter values:

primary

pre-primary

junior

senior

Note: council and district may be different if there is more than one council in a district

REGION	REGION LEVEL ENDPOINT	REGION AND SCHOOL TYPE ENDPOINT	EXPLANATION	CSV	JSON
Northern	/northern	/northern/type{school_type}	Operational schools in Northern	Download	View
Southern	/southern	/southern/type{school_type}	Operational schools in Southern	Download	View
Eastern	/eastern	/eastern/type{school_type}	Operational schools in Eastern	Download	View
North Western	/north western	/north western/type{school_type}	Operational schools in North Western	Download	View
Western	/western	/western/type{school_type}	Operational schools in Western	Download	View

For example, to retrieve primary school data for the Northern region, the user would replace the base URL of: <https://schoollist.mbsse.gov.sl/api/KEY/national>

with <https://schoollist.mbsse.gov.sl/api/KEY/region/northern/type/primary>

Alternatively, user may select the location (Region, Districts, or Councils) and click the “Download” button to obtain the CSV file or may click “View” to access the school list data in JSON format instead.

TROUBLESHOOTING & CONTACT INFORMATION

For more information, please contact Deputy Director of EMIS Mr Ansumana at jkansumana@education.gov.sl who will be able to help